

[WWW.SKYLIGHTSAFETYNET.CO.UK](http://WWW.SKYLIGHTSAFETYNET.CO.UK)



# SKYLIGHT SAFETY NETS

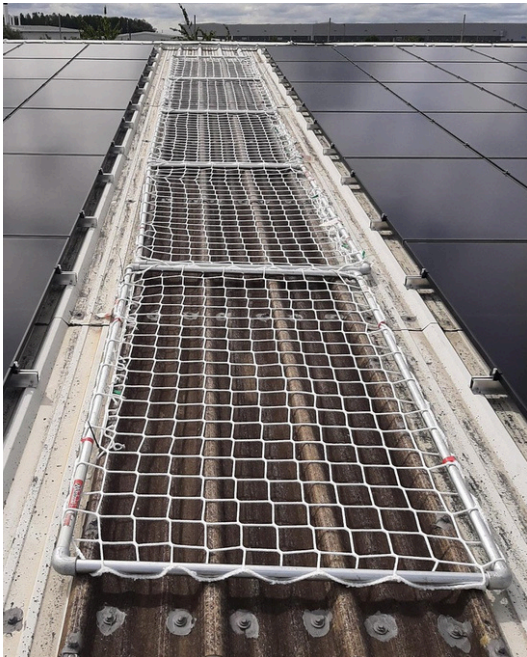


**BESPOKE FALL ARREST SAFETY  
NETS FOR FRAGILE ROOF  
SURFACES AND SKYLIGHTS**

**Skylight Safety Nets from SPS Safenet are a simple and cost effective solution to protect operatives when working on flat roofs around fragile skylights. This is an area often overlooked when carrying out roof maintenance - and an area where the most serious and often fatal falls from height occur.**



**Safety nets are the HSE's preferred method of fall arrest, reducing the need for a secondary method of rescue should a fall occur, whilst increasing the operatives chance of survival in the result of a fall.**



**Developed in the UK, Safetube and Quadtube Skylight Safety Nets are manufactured to BS/EN 1263/1, available in almost any size required, and can be installed in minutes. Each product can be reused on other high risk areas as works progress or can be left in-situ longer term for any future roof access that may be required, offering peace of mind for the building owner.**



**Operatives are able to work safely around and over the net to access fixings for replacement or repair without risk of falling onto a fragile surface of skylight or through the roof aperture.**

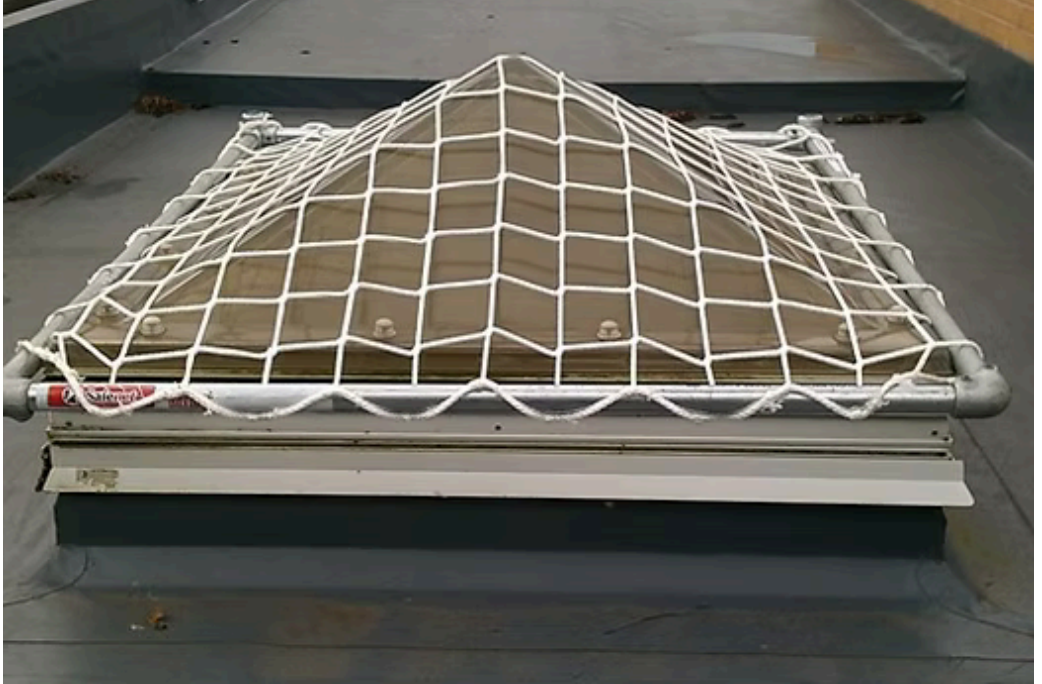


**No mechanical fixings are required into the roof structure as counterweights can be used or alternative temporary anti slip fixing points provided. HSE's Advisory Committee for Roofwork drop test demonstrates the integrity of the framed units under demanding conditions. No bulky handrail guards or temporary scaffolds are required around skylights, making them particularly useful on roofs where no existing or suitable fall arrest anchor system is installed.**



**OUR SKYLIGHT PROTECTION SYSTEM**

# **SAFETUBE**



The Safetube system consists of a galvanised tubular frame, being easily assembled on site. These are simply placed over the fragile roof area often requiring no fixings into the roof structure, and can also be used by operatives when carrying out site surveys in addition to longer term protection.

The independent ACRM drop tests demonstrate the units strength when simply placed over a domed skylight. Scan the QR code to view our drop test video.







**If any doubt exists to the integrity of the skylight, the Safetube is placed over the fragile skylight without restricting access to the work area at any point. Where 'In Plane' roof skylights exist, these can also be protected with the Safetube and temporarily secured to the roof to prevent any movement during the works. Further reducing risk where internal slinging of a safety net is not always possible.**



**OUR SKYLIGHT PROTECTION SYSTEM**

# QUADTUBE



The Quadtube is equivalent in design performance to the Safetube but has the benefit of being supported on legs above a skylight aperture. This product is ideally suited to offer protection when carrying out localised repairs or replacing skylights. These are also ideal when applying liquid roof coverings, allowing virtually no interruption to the application process.







**Our Safetubes and Quadtubes are made to measure, and can be manufactured to protect any shape or size of skylight. They are cost effective compared to other methods of skylight edge protection barriers or fall restraint systems, and easy to deploy on awkward access areas or small roofs where installation of fall restraint systems may be impractical. They are lightweight and can be assembled and secured in minutes over almost any type of skylight.**





**Rentokil**

**arco**® Professional  
Safety Services



**Sainsbury's**

**RAILWAY  
MUSEUM**



## **CONTACT SPS**

**SKYLIGHT PROTECTION SYSTEM**

**[WWW.SKYLIGHTSAFETYNET.CO.UK](http://WWW.SKYLIGHTSAFETYNET.CO.UK)**

To see how SPS Safenet can reduce your costs,  
save you time and improve roof safety for all,  
visit our website to find out more.

Tel: 07842 430769

Email: [sales@skylightsafetynet.co.uk](mailto:sales@skylightsafetynet.co.uk)

We are a family business based in Yorkshire.  
Established 2006.

**SPS SKYLIGHT PROTECTION SYSTEM**  
**PAT PENDING - WORLD WIDE DESIGN SECURED**